



**HOLIDAY
HOMEWORK
CLASS- V
SESSION
2026-27**

SUMMER





Dear Parents

Holidays are always a welcome break from the normal routine and all of us look forward to them. They give us an opportunity to pursue all the activities that we enjoy but never found enough time to indulge in. When used appropriately, homework can reinforce what has been taught, contribute to the development of children, cultivate a healthy disposition towards learning and most importantly, maintain a continuation with the process of education that began at the Learning Center.

The holiday homework for Class V has been especially designed to strengthen the concepts taken up in ongoing themes. It will also ensure your maximum participation in your child's development plan. Care has been taken to plan activities that would help to build senses, enrich vocabulary. Enhance creativity and thinking skills. They will also develop an appreciation for music. We have tasks that encourage the spirit of scientific enquiry and foster awareness about nature. Along with all this, we have included personality development activities that aim at building values, improving self-esteem and memory.

Make sure that you click photographs of your child while doing all these activities with him/her. Create a collage of all the clicked pictures in scrapbook and send it to us so that we can celebrate his/her accomplishments when the school reopens.

We wish you a very happy and fruitful family time during this vacation and hope you have fun sharing the homework with your child.

Best regards

GUIDELINES FOR HOLIDAY HOMEWORK FOR THE STUDENTS

We are giving you a variety of fun filled activities and worksheets. Please take printout of holiday homework, which you can do during your vacation. Do all the written work neatly in separate three in one notebook and submit your work to your teacher after the vacation.

Here are few tips for you to follow -

Play simple games like scrabble, Chess, Atlas, Word building.

Assign a permanent workplace and a work-time. This brings in discipline in your life.

Help your mother to keep the house clean. Do small household jobs like dusting, watering the plants, laying the dinner table and so on. Keep your room and shelf clean and well organized.

Be encouraged to take up yoga or any other form of healthy activity during the vacation.

Try to converse in English with your parents, siblings, friends and relatives, it will improve your proficiency in the language.

Switch off lights and fans when not in use. Kindly inculcate reading habits and read good books.



ENGLISH

Instructions:

1. Learn and practice all the work done till now in a rough notebook.
2. Prepare well for your English FA 1 (14 July,2026)
3. All the Worksheets should be done in the fair Grammar notebook.

WORKSHEET-1 ENGLISH

Q 1 Read the Passage given on Page No. 19 to 28 in your Knowledge Express and answer the questions that follow in the book itself.

Q 2 Read the following sentences and identify the degree of adjectives used in the following sentences.

- a) The little boy is quite shy.
- b) This dish is sweeter than the other one.
- c) Mr. Ambani is one of the wealthiest men.
- d) The weather is getting hotter these days.
- e) The palace is in the farthest corner of the town.
- f) June is the hottest month of the year.

Q 3. Fill in the blanks with the correct degree of adjectives.

- a) A rabbit runs _____ than a tortoise. (fast)
- b) This is a very _____ storybook. (interesting)
- c) Mount Everest is the _____ peak in the world. (high)
- d) Iron is _____ than wood. (heavy)
- e) My drawing is _____ than yours. (good)
- f) Prevention is _____ than cure. (bad)
- g) She wore a _____ dress to the party. (beautiful)
- h) The mango is the _____ fruit of all. (sweet)
- i) This puzzle is _____ than the last one. (difficult)



Quick Rules to Remember

Positive Degree: Used when talking about only one person or thing (No comparison). Example: soft, bright.

Comparative Degree: Used when comparing two people or things. Look for the word "than" after the blank. Example: softer, brighter.

Superlative Degree: Used when comparing three or more people or things. Look for the word "the" before the blank. Example: softest, brightest.

Q 4. Read the following sentences carefully. Underline and write the type of noun used.

- Kolkata is the capital of West Bengal. _____
- The Royal Bengal Tiger is found in the Sunder bans. _____
- The jury gave a unanimous verdict. _____
- Laughter is good for health. _____
- The crowd is very big. _____
- The elephant is an intelligent animal. _____

Ques 5. Fill in the blanks with the appropriate pronouns.

- Mohan is a good boy. ____ always listens to ____ teacher.
- Vihan and Krish are twin brothers. ____ take the same bag to school.
- Meera and I are very good friends. ____ have known each other since childhood.
- The grapes are very sour. Where did you buy ____?
- I love watching the Tom and Jerry cartoon. ____ reminds me of my childhood days.
- I bought this book for my sister. ____ often read it together.
- This is Stella. Do you know _____?



Q 6. Write a short paragraph in about 40-50 words on A Visit to Science Museum .Use these Value points to write the paragraph.

- How did you get the chance for this trip?
- What preparations did you do for this trip?
- What all things you did at the Science Museum?
- What did you enjoy the most there?
- What all activities did you do there?
- What is the uniqueness of this Museum?

Language & Vocabulary

Q 7 "English Around Me" Photo Journal: Walk around your neighborhood or flip through magazines. Cut out or take pictures of English words, signs, or labels, paste them in a scrapbook or A3 size sheet and write one sentence about each.

Q 8. "A dictionary is one of the most important tools during your time studying at a university."

Prepare a dictionary having minimum five words of each alphabet with meaning to enhance the vocabulary.





हिंदी

सामान्य निर्देश:

- * लेख स्वच्छ एवं सुंदर होना चाहिए।
- * 10 दिनों तक एक पृष्ठ सुलेख छोटी कॉपी (₹10) की में अलग से करना है।
- * अध्ययन एक्सप्रेस में पृष्ठ संख्या (31) पर दिए गए चित्र संख्या १,२ को काटकर अपनी हिंदी व्याकरण की उत्तर पुस्तिका में चिपकाकर उस चित्र का वर्णन करें।
- * रचनात्मक मूल्यांकन- १ में आने वाले सभी पाठों को पुनरावृत्ति करें।
- * "पर्यावरण संरक्षण " शीर्षक पर अनुच्छेद लिखें। अनुच्छेद के अंत में शीर्षक से संबंधित कोई नारा(स्लोगन) भी लिखें।
- * हिंदी कार्य परियोजना :- क्रिया, विशेषण, वचन, लिंग, सर्वनाम इनमें से किसी भी एक विषय पर सुंदर माॅडल तैयार करें। आप नीचे दिए गए लिंक की सहायता ले सकते हैं।
<https://youtu.be/avVPh-spHp4?si=k7OYNbhTbtEbm9lo>
https://youtube.com/shorts/d45R8yb2aAI?si=aOOuSHXeP8_NYpTj
- * अध्ययन एक्सप्रेस पुस्तक में से पाठ -वर्ण विचार, शब्द विचार, संज्ञा का अभ्यास कार्य पूरा करें।
- * अध्ययन एक्सप्रेस में पृष्ठ संख्या 23 पर दिया गया अपठित गद्यांश पूर्ण करें।



MATHEMATICS

Holiday Homework Instructions

1. Holiday homework should be completed under parental guidance.
2. Kindly present all your work in a neat, clean and creative manner.
3. Learn multiplication tables from 2 to 20.
4. Practice Chapters 1 and 2 thoroughly.
5. Solve the Mental Math and worksheet of Chapters 1 and 2 in your textbook.
6. Solve Chapters 1 and 2 in Knowledge Express.

Use A-4 size sheets for solving word problems.

FUN WITH MATH

1. Spot The Imposter



ODD ONE OUT! ?



In each row, one number is different from the others.
Find the odd one out and write the reason.

1 12 24 36 48 50

Reason: _____

6 125 216 343 512 729

Reason: _____

2 15 25 35 45 47

Reason: _____

7 $\frac{3}{4}$ $\frac{2}{4}$ $\frac{5}{4}$ $\frac{4}{4}$ $\frac{6}{4}$

Reason: _____

3 81 64 49 36 35

Reason: _____

8 0.25 0.5 0.75 0.9 1.25

Reason: _____

4 2 4 8 16 18

Reason: _____

9 7 14 21 28 30

Reason: _____

5 100 121 144 169 196

Reason: _____

10 11 13 17 19 21

Reason: _____



Think smart!
Find the odd one! 😊





2. Crack the Roman code

Puzzle

Solve the following crossword puzzle with the help of given clues.
[Hint: Record all your answer in Roman Numerals.]

Across

3. $500 - 100 =$ _____

4. $27 - 5 =$ _____

6. $72 - 8 =$ _____

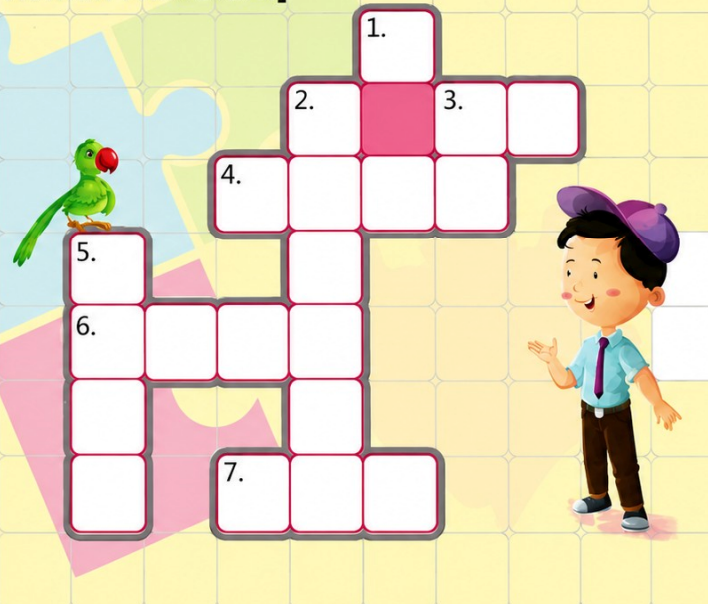
7. $50 + 9 =$ _____

Down

1. $66 - 16 =$ _____

2. $31 + 6 =$ _____

5. $40 + 2 =$ _____



PROJECT WORK

Instructions:

1. Use your imagination to add beautiful colors, designs, decorations, and creative ideas.
2. You may use different materials like chart paper, cardboard, craft paper, ice-cream sticks, buttons, glitter, etc
3. Make your project neat, colorful, and attractive.
4. Feel free to give your project a personal touch and creative style.
5. There is no need to copy the sample pictures exactly. They are only for reference.
6. Every child's creativity is unique, special, and appreciated.
7. Enjoy the activity and have fun while learning!



1. Fractions Bird

Create a colourful bird using different fraction parts and label each section with correct fractions.

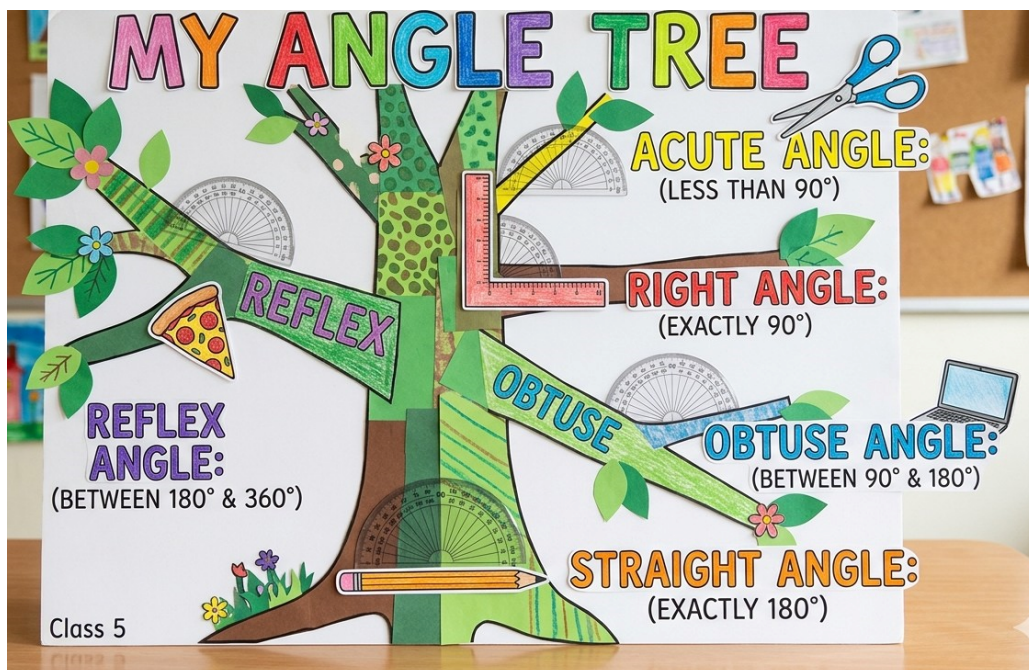
Roll Numbers - 1 to 7



2. Angle Tree

Create an Angle Tree using different branches to show acute, right, obtuse, straight and reflex angle with labels and decorations.

Roll Numbers - 8 to 14





3. FACTOR TREE FUN

Make a colourful factor tree by breaking the given number into its factors step by step until only prime numbers are left. Use any two different two digit numbers.

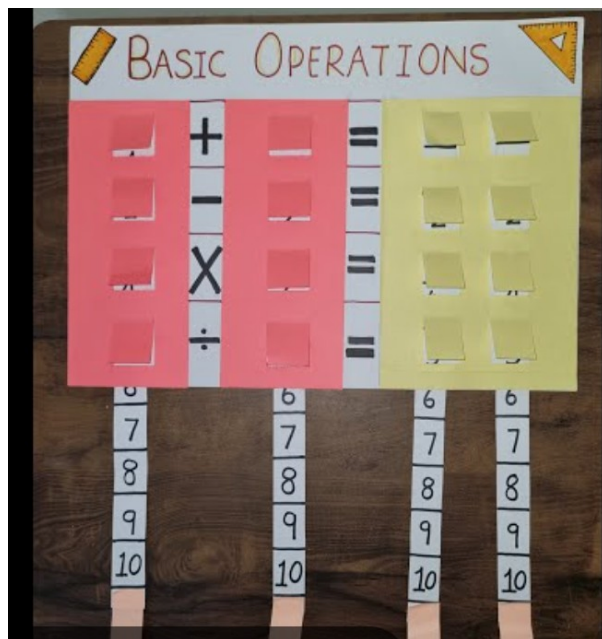
Roll Numbers - 15 to 21



4. Basic Operations Working Model

Slide the number strips to create and solve addition, subtraction, multiplication, and division sums in a fun and interactive way.

Roll Numbers - 22 to 28





5. Geometry World

Create a colorful geometry chart showing a point, a line, a line segment, a ray, parallel lines, intersecting lines, and curved lines with neat labels and daily life examples.

Roll Numbers - 29 onwards

GEOMETRY WORLD

Basic Building Blocks of Geometry

1. POINT

A point has no size. It shows exact position.

Example :

Location on map

4. RAY

A ray has one end point and extends infinitely in one direction.

Example :

Light from a torch

2. LINE

A line is straight and has no end. It extends infinitely in both directions.

Example :

Straight road

5. PARALLEL LINES

Parallel lines are always the same distance apart and never meet.

Example :

Railway tracks

3. LINE SEGMENT

A line segment has two end points. It has fixed length.

Example :

Edge of a pencil

6. INTERSECTING LINES

Intersecting lines meet at a point.

Example :

Blades of scissors

7. CURVED LINE

A curved line changes direction.

Example :

Flow of a river

EXAMPLES FROM DAILY LIFE

Frame of a picture (line segments)

Flag pole (line)

Light from bulb (ray)

Divider on road (parallel lines)

Window intersecting lines

Geometry is all around us!



SCIENCE

Instructions : Do holiday homework in Science fair Notebook

Revise FA1 syllabus

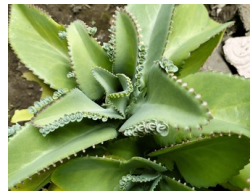
Q1. Identify the following-

- 1.I am the part of the flower and develops into fruit.
- 2.I disperse through water but I have water inside me.
- 3.I travel long distances by my hairy wings and use to make fibres.
- 4.I look like leave and store food for the baby plant
- 5.I am a root and a good source of Iron.
- 6.I am a germ and cause the common cold.
- 7.I am an insect and spread malaria.
- 8.I am a nutrient but excess of me in a diet is not good for health.



Q2. Fill in the blanks-

- 1.The seeds of _____ are dispersed by wind.
- 2.Stamen is the _____ part of the flower.
- 3.The outer covering of a seed is known as _____.
- 4.The process of gathering mature crops from the field is known as _____.
- 5.Goitre is caused due by the lack of _____.
- 6.Excess intake of fatty foods can lead to _____.
- 7._____ are body building food.
- 8.Anaemia is a _____ disease.



Q3. Multiple Choice Question-

- 1.Which food item is a good source of roughage?
a) Butter b) Sugar c) Fruits d) Bread



2.The food item having carbohydrates, proteins, fats, vitamins and minerals is-

- a)Fruits b) Vegetable c) Milk d) Rice

3.Energy giving nutrients are-

- a)Proteins b) Vitamins c) Carbohydrates and fats d) Only fats

4.A communicable disease is

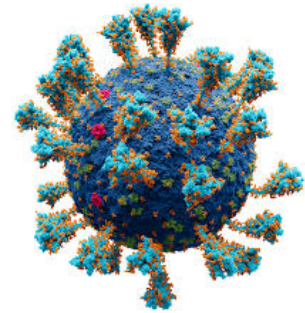
- a)Rickets b) Scurvy c) Tuberclosis d) Beri-Beri

5.Plants that grow from the stem are

- a)Carrot b) Bryophyllum c) Potato d) Fern

Q4. Answer the following-

- 1.What is seed germination? What does a seed need to germinate?
- 2.What are the different ways in which plants can reproduce? Explain.
- 3.How do diseases spread? Explain.
- 4.Give reasons how Exercise and Yoga keep our body fit.



Q5) HOTS

1)Preeti and Sonia, were both were good at their studies and in sports. During summer vacation, they ate a chat, pakora, samosa, pizza and ice cream almost every day. After vacation, when the school reopened, the sports teacher took the whole class to the sports ground. Preeti and Sonia were asked to run the 100 metres race along with other students. The teacher blew the whistle and the students ran. Preeti and Sonia could not run more than 30 metres as they were short of breath.

a.What was the reason for their failure?

b What do you think the girls must do to become healthy and active again?

2) On a rainy day, Peggy was eating cake when her mother called her. She kept the plate on a window slab but forgot about it. Four days later, she remembered it and rushed to pick it up. She was horrified to see its condition. Can the cake in that condition be eaten? Why or why not? Reflect upon the values of Peggy from this.

Q) Make a project on From Tiny Seed to Green Plant showing the stages of seed germination with pictures or diagrams.(Roll no 1 to 10)

<https://youtube.com/shorts/ElvGdM9gbN4?si=M7LI4LzuYMBZExyD>



Make a project on **Water Cycle** explaining its stages with a neat and labelled diagram.(Roll no 11 to 20)

https://youtube.com/shorts/5evzPbk60_s?si=q31UAOWKZT3OL0Dd

Make a project on **Photosynthesis** showing how green plants make their food with the help of a diagram.(Roll no 21 to 36)

https://youtube.com/shorts/nYmvSnPjiuw?si=ZLBI5QLHI2VERw_P

<https://youtube.com/shorts/sG0b7hm5fQA?si=nuFt1AhwApSuHiee>



SOCIAL STUDIES

Note: All work to be done in Scrap Book

Give two examples of the following major landforms of the Earth.

Landforms	Examples	Photo/Drawing
Mountains	_____	_____
Plains	_____	_____
Hills	_____	_____
Plateaus	_____	_____
Valleys	_____	_____

Draw a map of your way to school

- use at least 5 symbols
- show North Direction

Make a 3D model of different landforms



reference picture

Make a Sun dial

materials required - pencil, pen, and paper plate



5 People live in different types of houses depending on the climatic conditions of the places. Match the following.

Column A

Column B

(a)



(i) Coldest regions

(b)



(ii) Regions with heavy snowfall

(c)



(iii) Regions with moderate climate

(d)



(iv) Flood Regions

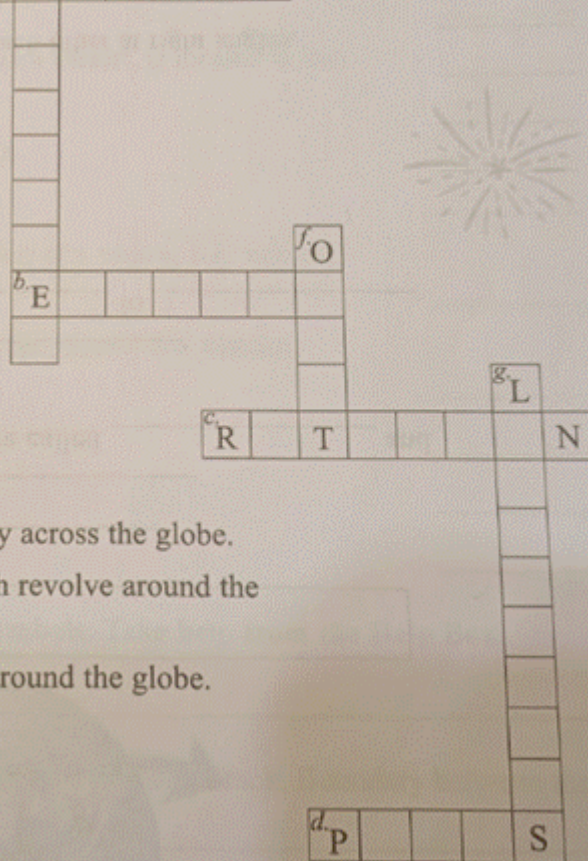


7. Read the given clues and solve the crossword puzzle.

Across

^aR ^eL N

- (a) It is the movement of the Earth around the Sun.
- (b) It is an imaginary line drawn half-way between the North Pole and the South Pole.
- (c) It is the movement of the Earth on its axis.
- (d) The end points on the axis.



Down

- (e) Imaginary lines drawn horizontally across the globe.
- (f) A fixed path along which the Earth revolve around the Sun.
- (g) Imaginary lines drawn vertically around the globe.

8. (a) The lines that run from east to west are called

(i) Latitudes (ii) Longitudes

(b) The parallels are imaginary _____ lines.

(i) vertical (ii) horizontal

(c) An imaginary horizontal line drawn midway between the North Pole and the South Pole that divides the Earth into two equal parts is called the

(i) Axis (ii) Equator

(d) The part of the Earth from the Equator to the North Pole is called the

(i) Northern Hemisphere (ii) Southern Hemisphere

(e) The part of the Earth from the Equator to the South Pole is called the

(i) Northern Hemisphere (ii) Southern Hemisphere



संस्कृत

सामान्य निर्देश

*सभी ग्रीष्मावकाश गृह कार्य एक छोटी कॉपी में अलग से करना है। कोई भी विद्यार्थी उत्तर पुस्तिका में ग्रीष्मावकाश गृह कार्य नहीं करेंगे।

* लेख स्वच्छ एवं सुंदर होने चाहिए।

* संस्कृत शब्दाः हिंदी से संस्कृत में याद करें।

* रचनात्मक मूल्यांकन-१ में आने वाले सभी पाठ की दोहराई करें।

प्रश्न -1 मञ्जूषा में दिए गए स्वर और व्यंजनों को अलग-अलग करके लिखिए।

मञ्जूषा- अ, न्, ऋ, ऐ, ओ, प्, य्, व्, इ, ण्, ढ्, उ

स्वराः	व्यञ्जनानि
.....
.....

Shot on OnePlus

प्रश्न 2 निम्नलिखित स्वरों को निर्देशानुसार लिखिए।

अ, ई, ऊ, ओ, औ, इ, उ, ऋ, ऐ

ह्रस्व	दीर्घ	संयुक्त
.....
.....
.....

प्रश्न 5 नीचे दिए गए शब्दों के वर्ण विच्छेद करें।

(क) जम्बूः = 'ज्+अ+म्+ब्+ऊः

(ख) जम्बीरः =+.....+.....+.....+.....+.....

(ग) दाडिमम् =+.....+.....+.....+.....+.....

(घ) आम्रम् =+.....+.....+.....+.....

(ङ) नारिकेलम् =+.....+.....+.....+.....+.....+.....

(च) द्राक्षाफलम् =+.....+.....+.....+.....+.....+.....+.....

(छ) कदलीफलम् =+.....+.....+.....+.....+.....+.....+.....

(ज) लीचिका =+.....+.....+.....+.....+.....

(झ) सेवम् =+.....+.....+.....+.....



प्रश्न 6 इस वर्ग पहली में दिए अक्षरों से इन सहेलियों के नाम रख सकते हैं।

ने	र	मा	ला
हा	मा	सा	रा
ल	लि	ता	रा
सि	या	ना	मा



.....



प्रश्न 7 अकारांत और आकारांत पशु- पक्षियों के चित्रों के सामने उनके नाम लिखिए और इसी प्रकार चार्ट तैयार कीजिए ।



.....



.....



.....



.....



.....



.....



.....



.....



.....



.....



.....



.....

* संस्कृत कार्य परियोजना:- पुल्लिंग, स्त्रीलिंग, नपुंसकलिंग पर आधारित एक स्क्रेप बुक तैयार करें । मदद के लिए लिंक नीचे दिया गया है।

<https://youtube.com/shorts/sV5QqnA90qo?si=2vYezUhJSThGjF4x>



COMPUTER

Q1) Fill in the Blanks

- 1.A table is made up of rows and _____.
- 2.We use the _____ tab to insert a table in MS Word.
- 3.A row goes from left to _____.
- 4A column goes from top to _____.
- 5.Tables help us organize information in a neat _____.
6. WordArt is used to make text look more _____.
7. We can change the _____ style of text using WordArt.
- 8.The Font Size tool changes the _____ of letters.

Q2). Choose the Correct Answer

- 1)Which option is used to create a table?
 - a) Home
 - b) Insert
 - c) Design
- 2)A table with 3 rows and 4 columns has:
 - a) 7 boxes
 - b) 12 boxes
 - c) 10 boxes
- 3)The small boxes in a table are called:
 - a) Cells
 - b) Slides
 - c) Shapes
- 4,)Which of these can be made using tables?
 - a) Timetable
 - b) Marks sheet
 - c) Both a and b

Q3) Write True or False

- 1)Tables can only contain numbers.
- 2)We can change the color of a table.
- 3) A cell is a part of a table.
- 4)Tables make information difficult to read.

Q). Short Answer Questions

- 1)What is a WordArt?
- 2)Name any two text styles in MS Word.



- 3) Why do we use Font Color?
- 4) What is the use of Bold text?
- Q) Practical Activity

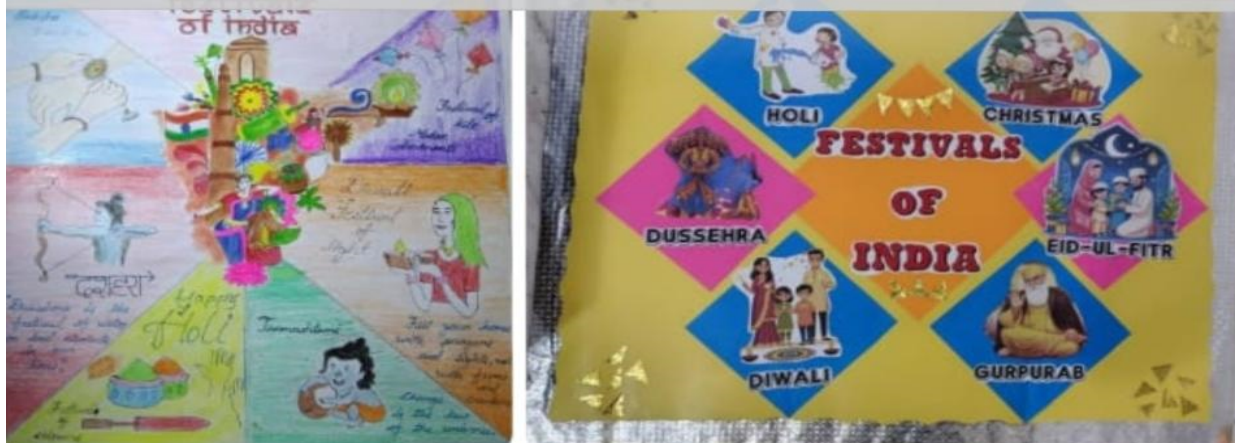
Use MS Word to create a table of all the Presidents of India till date.

Sl.No	President		From	To
1	Rajendra Prasad		26 January 1950	13 May 1962
2	Sarvepalli Radhakrishnan		13 May 1962	13 May 1967
3	Zakir Husain		13 May 1967	3 May 1969
4	V. V. Giri		24 August 1969	24 August 1974
5	Fakhruddin Ali Ahmed		24 August 1974	11 February 1977
6	Neelam Sanjiva Reddy		25 July 1977	25 July 1982
7	Zail Singh		25 July 1982	25 July 1987
8	Ramaswamy Venkataraman		25 July 1987	25 July 1992
9	Shankar Dayal Sharma		25 July 1992	25 July 1997
10	K. R. Narayanan		25 July 1997	25 July 2002
11	A. P. J. Abdul Kalam		25 July 2002	25 July 2007
12	Pratibha Patil		25 July 2007	25 July 2012
13	Pranab Mukherjee		25 July 2012	25 July 2017
14	Ram Nath Kovind		25 July 2017	25 July 2022
15	Draupadi Murmu		25 July 2022	Current (Term ends on 25 July 2027)



GENERAL KNOWLEDGE

Q1 Create a " Festival Calender showing important Indian festivals month wise.



Q2 Create a Paper Clock and show different time zones of the world.

Here are some beautiful and creative ideas for making a World Time Zone Clock using paper plates, cardboard, charts, and colours:



Q3 Create a Bird Feeder using waste materials and keep food and water for birds. (Click your pictures and send it to your General Knowledge teacher)



- Picture for reference

Q4 Learn and Revise Chapters 1to 8 .



DRAWING

Q1. Create a creative pen holder using old or waste materials from home. Use items like ice cream sticks, paper cups, cardboard, buttons, newspaper, or ribbons to decorate it beautifully. Bring your pen holder to class and paste a picture of it in your grammar notebook.



HAPPY HOLIDAYS